



THE HUDSON

LUXURY SINGLE FAMILY HOMES

4 3
 
 2,520 SQ.FT.



FARMHOUSE



CRAFTSMAN

Home Features

Experience Upscale Living with spacious open floor plans built on larger lots, with lots up to 38ft wide and 165ft deep, optional vaulted ceilings, large windows set in modern contemporary architecture.

Gourmet Kitchen with quartz counter-tops, oversized island, premium stainless-steel appliances and walk-in pantry for ample storage.

Elegantly Styled Master Suite with optional vaulted ceilings, double vanity ensuite, stand-alone soaker tub and a splendidly spacious walk-in closet.

Entertainer's Delight featuring a grand foyer, a private mudroom entry from the

garage, and a versatile bonus room with optional vaulted ceilings—perfect for a games room or children's play area. The main floor includes a convenient powder room, while the stunning outdoor space boasts a covered deck and impeccably landscaped front and back yards, ideal for summer barbecues and sunset dining.

Stunning Interiors with plush carpets in all bedrooms, spa-inspired tiled bathroom floors, and rich wide-plank luxury vinyl plank flooring in the kitchen and great room. Designed for your lifestyle, this home includes a dedicated main floor office (most models), a double front-attached garage with extra space for DIY projects, and a spacious driveway for guest parking.

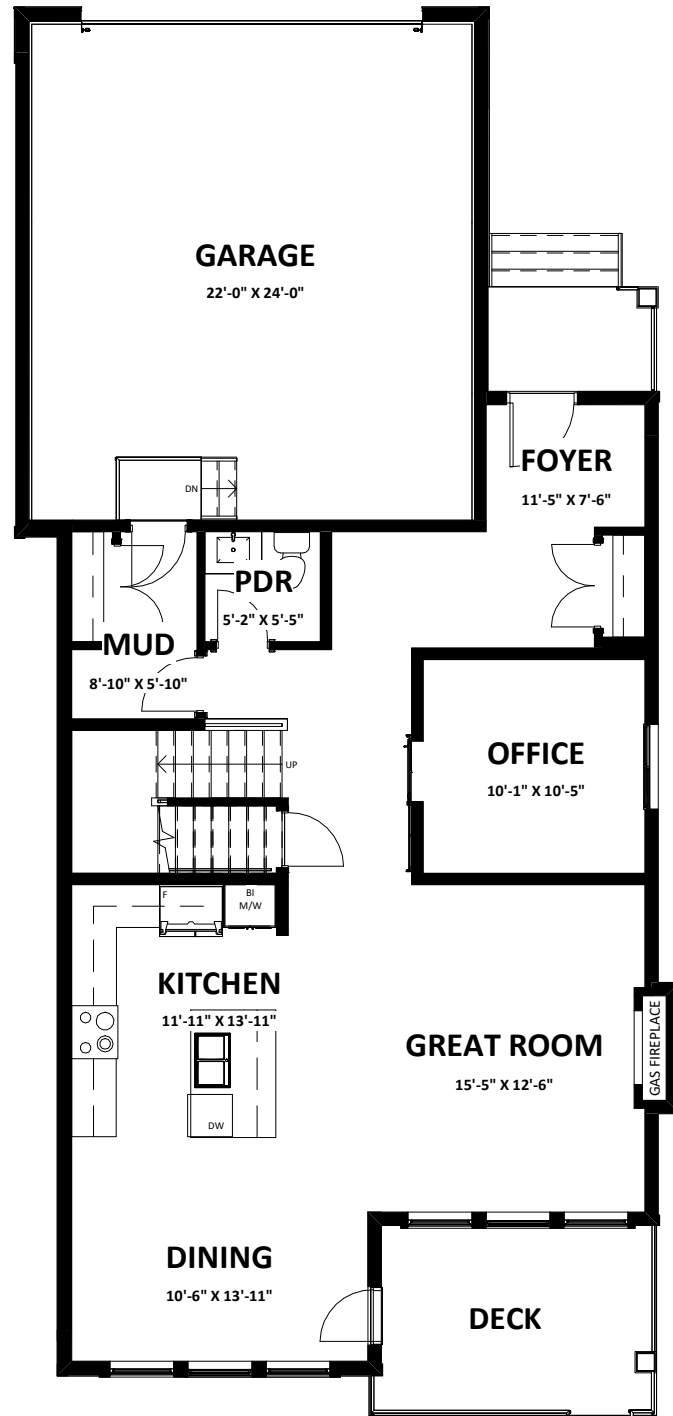
Live Your Most Stress-Free Life with options for an expanded living space, a stylish wet bar, or a legal walkout income suite with a private side entry and 9 ft. ceilings—perfect as a mortgage helper or for multi-generational living.

A Lively Community and World-Class Amenities enjoy the convenience of two elementary schools within walking distance, a vibrant commercial center along 130th Ave, a state-of-the-art YMCA recreation center, and the renowned South Health Campus Hospital just minutes away—all surrounded by lush green spaces and an extensive regional pathway system.

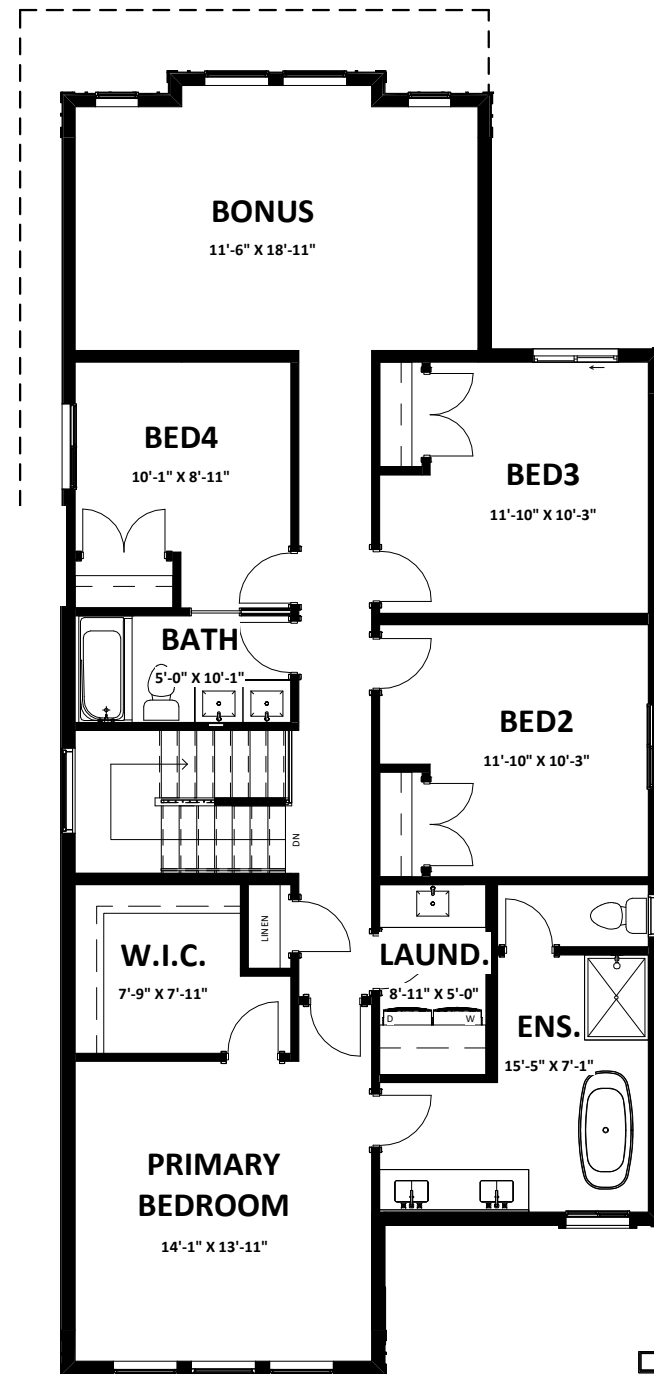
THE HUDSON

4 BEDROOM + BONUS ROOM | 3 BATHROOM
 2,520 SQ.FT. UNFINISHED BASEMENT 1,081 SQ.FT.

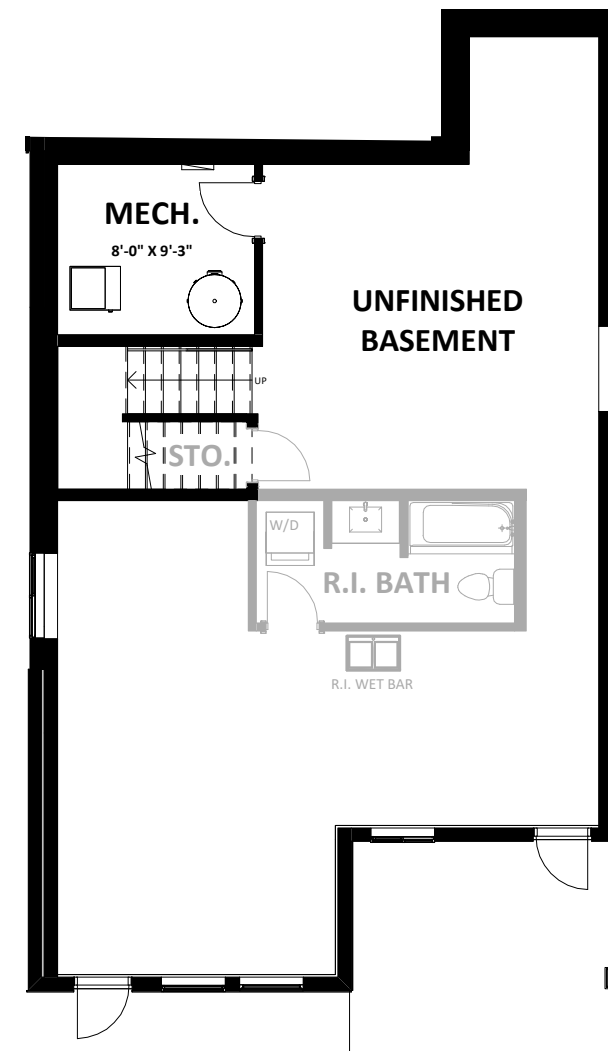
PLAN OPTIONS



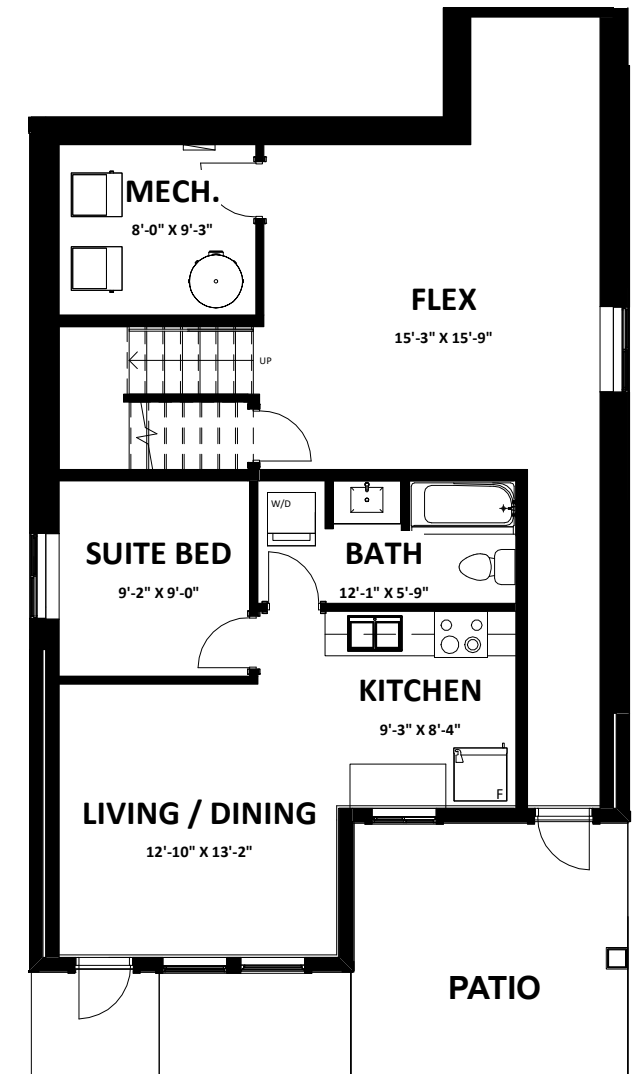
MAIN 1,085 SQ.FT.
GARAGE 526 SQ. FT.



UPPER 1,435 SQ.FT.



UNFINISHED BASEMENT 1,081 SQ.FT.



BASEMENT SUITE 478 SQ.FT. (OPTION)