



# SOUTH POINT

A MASTER PLANNED COMMUNITY

## THE EVELYN

2,072 SQ.FT.



PRAIRIE



# SOUTH POINT

A MASTER PLANNED COMMUNITY

## THE EVELYN

2,072 SQ.FT.

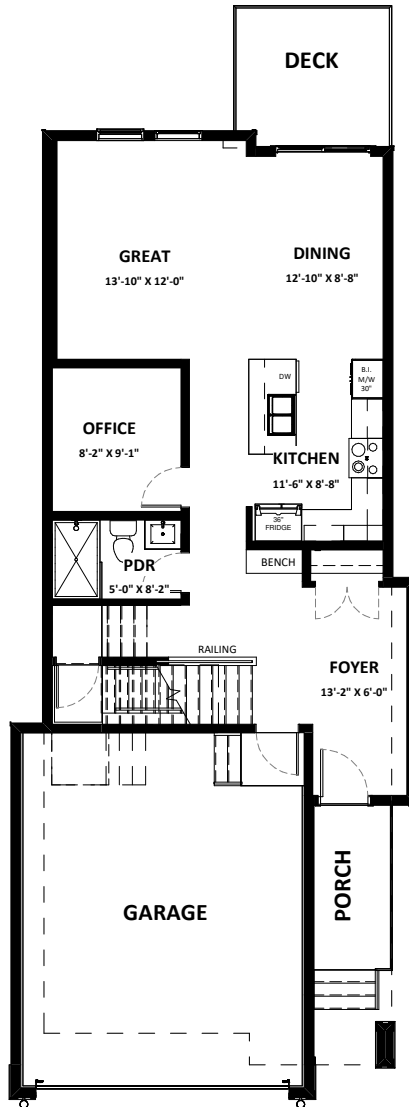
3 BEDROOM

+ OFFICE

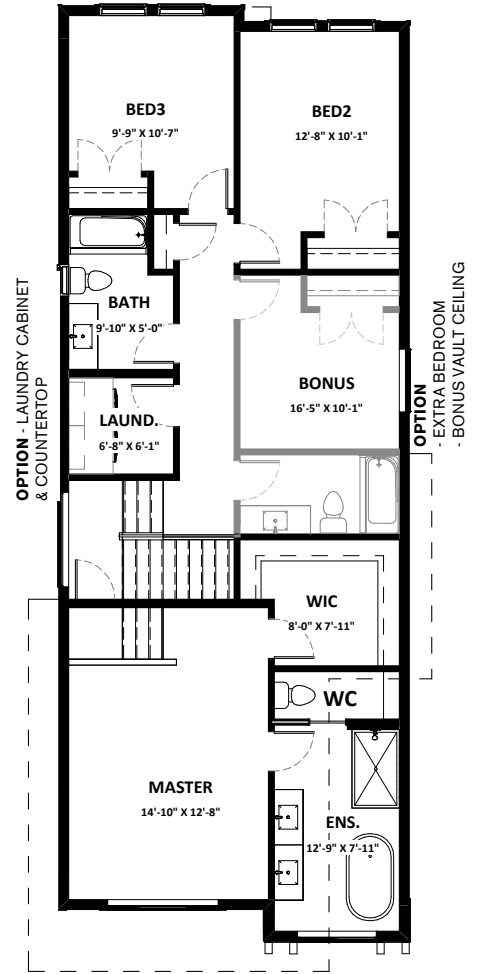
+ BONUS ROOM

3 BATHROOM

848 SQ.FT. UNFINISHED  
BASEMENT



**MAIN** 873 SQ.FT. **GARAGE** 436 SQ. FT.



**SECOND** 1,199 SQ.FT.



# SOUTH POINT

A MASTER PLANNED COMMUNITY

## THE EVELYN

2,072 SQ.FT.

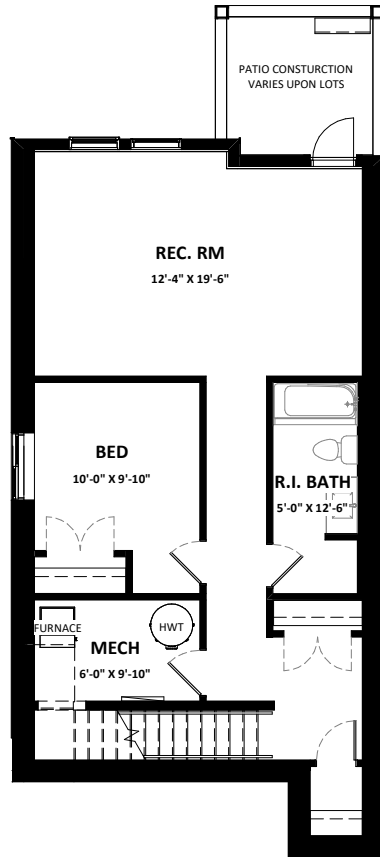
3 BEDROOM

+ OFFICE

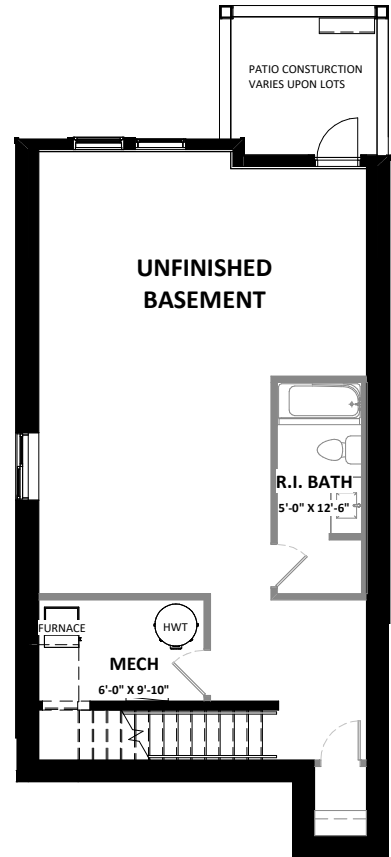
+ BONUS ROOM

3 BATHROOM

848 SQ.FT. UNFINISHED  
BASEMENT



**FINISHED BASEMENT 848 SQ.FT.**  
(OPTIONAL)



**UNFINISHED BASEMENT 759 SQ.FT.**