

FRONT ELEVATION

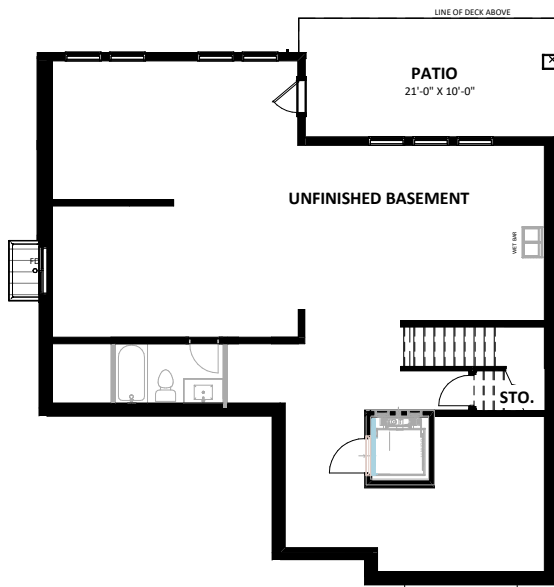


REAR ELEVATION

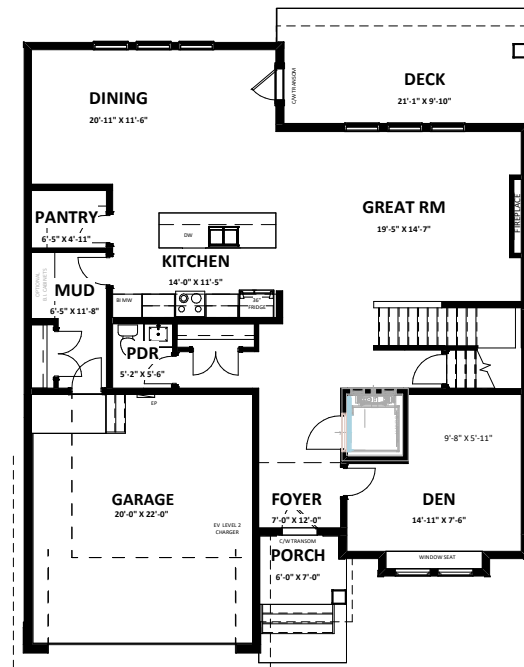


SISKIN 2 CRAFTSMAN

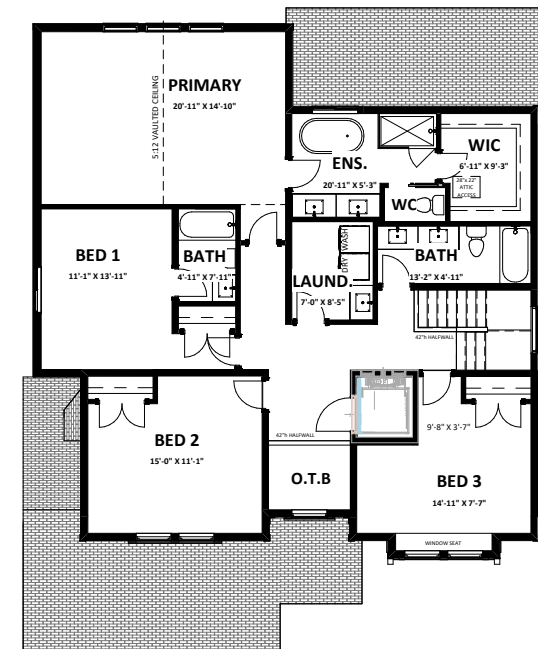
SINGLE FAMILY HOMES WITH WALK OUT BASEMENT



Unfinished Basement 1,459 sq.ft.



Main 1,470 sq.ft.
Garage 435 sq.ft.

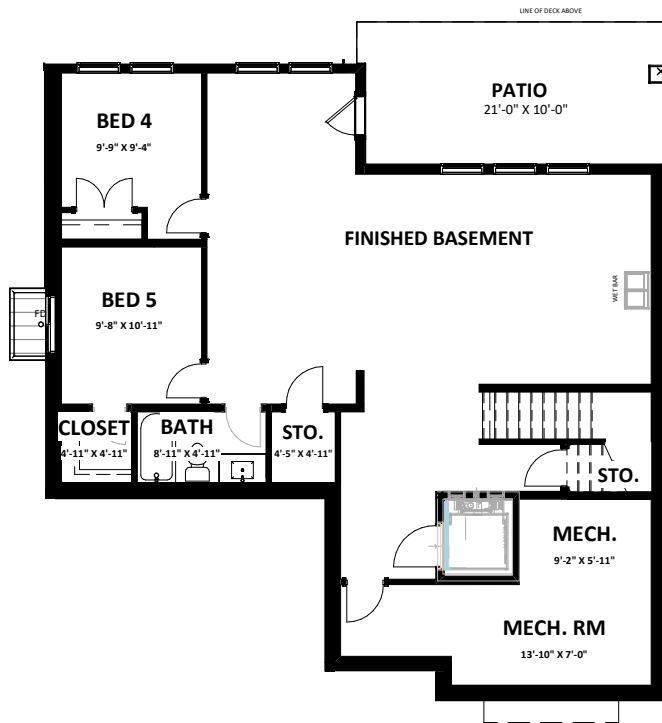


Second 1,570 sq.ft.

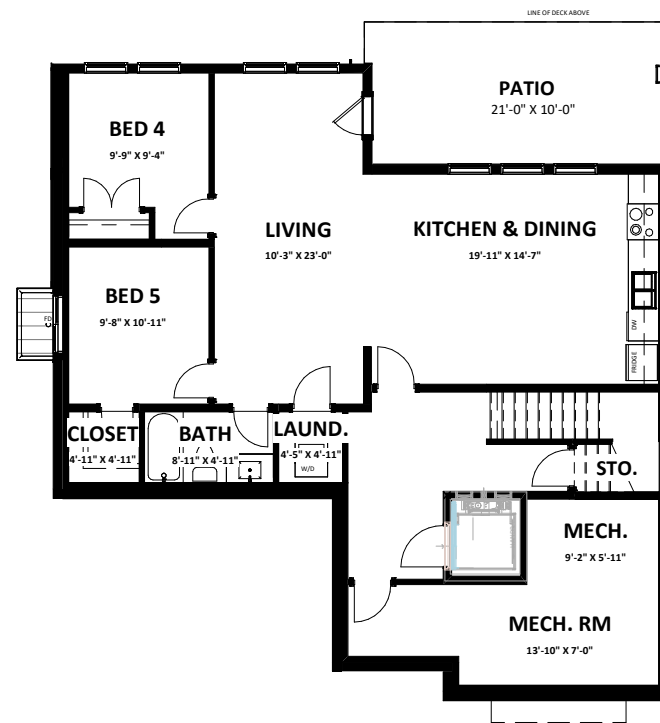


SISKIN 2

4 Bedroom + Den | 3 Bathroom
3,040 sq.ft. + 1,459 sq.ft. Unfinished Basement



Finished Basement 1,218 sq.ft.



Basement Suite 977 sq.ft.



SISKIN 2

Basement Suite Option
977 sq.ft.