

FRONT ELEVATION

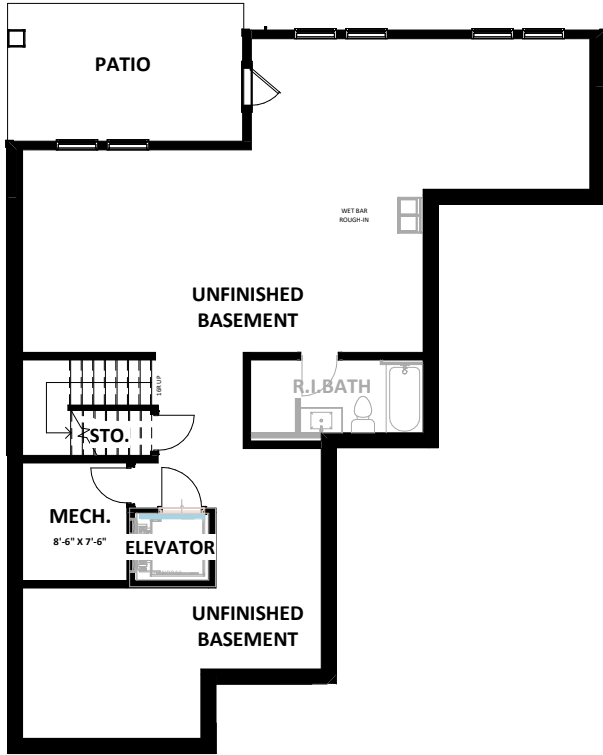


REAR ELEVATION

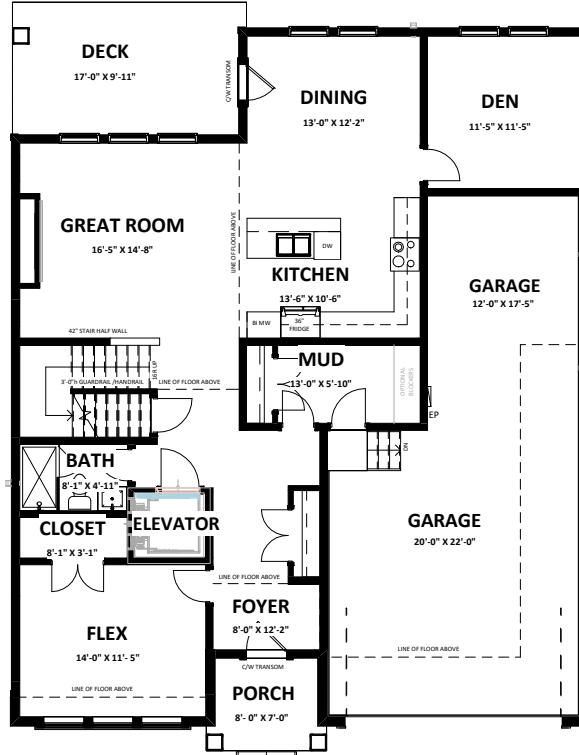


ROSS 2 CRAFTSMAN

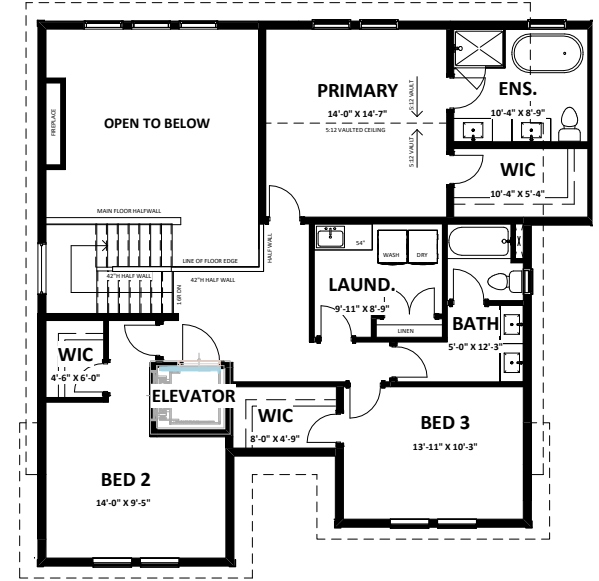
SINGLE FAMILY HOMES WITH WALK OUT BASEMENT



Unfinished Basement 1,421 sq.ft.



Main 1,417 sq.ft.
Garage 643 sq.ft.

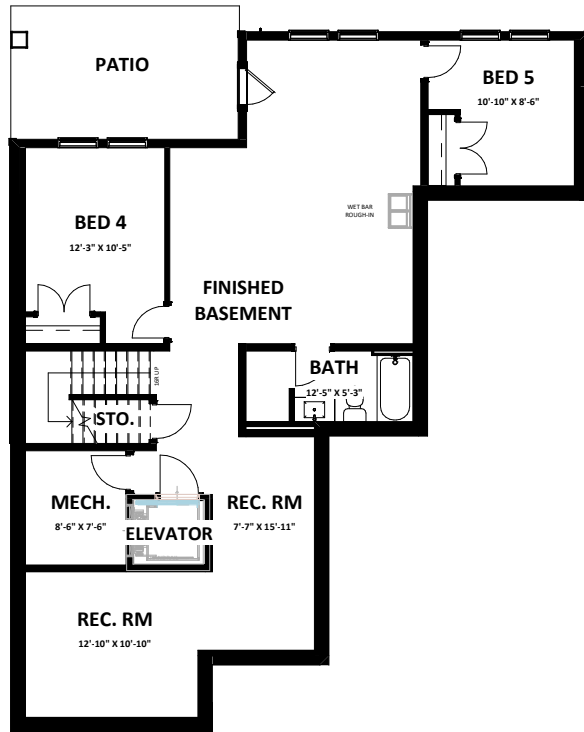


Second 1,198 sq.ft.

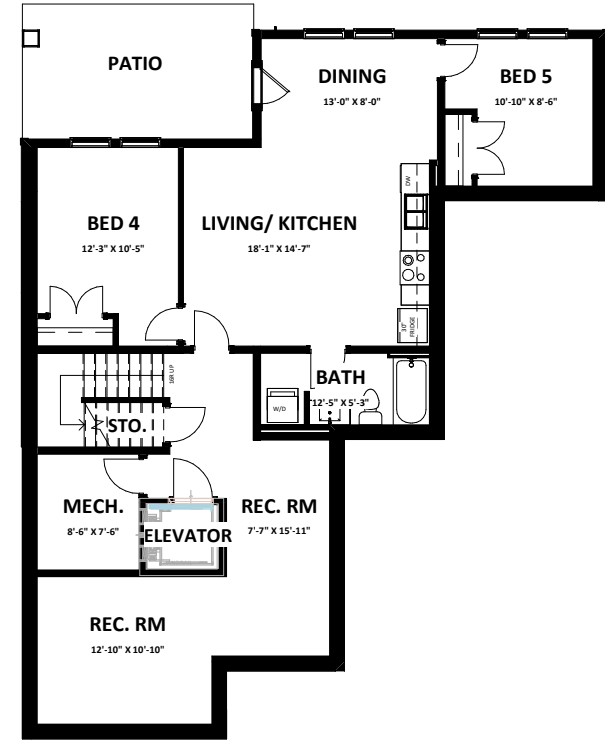


ROSS 2 CRAFTSMAN

3 Bedroom + Den + Flex | 3 Bathroom
2,615 sq.ft. + 1,421 sq.ft. Unfinished Basement



Finished Basement 1,357 sq.ft.



Basement Suite 835 sq.ft.



ROSS 2 CRAFTSMAN

Basement Suite Option
835 sq.ft.