



SOUTH POINT

A MASTER PLANNED COMMUNITY

URBAN TOWN HOMES





SOUTH POINT

A MASTER PLANNED COMMUNITY

FEATURES

URBAN TOWNHOMES

FIRST IMPRESSIONS THAT LAST

- The unique collection of 2-bedroom + flex and 3-bedroom urban townhomes blends the classic architecture with modern contemporary styles with posh and charismatic exteriors.
- The skillfully designed homes offer extensive detailing such as broad roof gable profiles with overhangs, and welcoming front porches.
- Fully landscaped front yards.
- Elegantly designed interiors featuring designer-selected colour palettes.
- Stylish 3" baseboards and 2" window and door casings.
- Beautiful interior doors with stylish chrome hardware across the home.
- Spacious master bedrooms feature a deluxe ensuite bathroom and a large walk-in closet.
- Rich wide-plank designer laminate flooring throughout the main living space; plush carpeting in bedrooms.

BEAUTIFULLY DESIGNED HOME

- Spacious open concept floor plans strategically designed to utilize every inch of the living space.
Stunning and low consumption pot lights and ceiling and wall fixtures.
- 9-foot ceilings throughout the main floor.
- Oversized windows that take advantage of the natural sunlight to brighten your home.
- Deadbolt lock and viewer on front entry door.
- Thermostat.
- Laundry hook-up (main or upper floor).

GOURMET KITCHENS

- Spacious center island with quart countertops.
- A double basin stainless steel sink with a sleek chrome pull-out vegetable sprayer.
- Modern flat panel kitchen cabinets of 36" (uppers) and modern metal chrome handles.
- Designer-selected full tile backsplash
- Convenient storage features include pot drawers and full depth cabinets over fridge.
- Premium stainless steel kitchen appliances.

SPA-INSPIRED BATHROOMS

- Deep soaker tub with handset tile surround.
- Elegant Delta chrome faucets
- Modern flat panel cabinets with stylish countertops
- Convenient powder room on main floor complete with pedestal sink.
- Private master ensuite features a deluxe shower and full-width vanity (some plans)

ULTIMATE IN COMFORT AND SECURITY

- Cozy, warm, and quiet R-22 insulation in the walls and R-50 in the ceiling.
- 92% high efficiency forced air furnace.
- Heat Recovery Ventilation (HRV) systems in all homes.
- High efficiency electric 50-gallon hot water tank.
- Double-glazed energy efficient Low-E windows.
- Built-in smoke detectors and carbon monoxide detectors for your safety.

PEACE OF MIND

- Built by Vesta Properties, a reputable builder/ developer with over 32 years of industry experience building over 5,000 homes in award-winning neighbourhoods across BC and Alberta.
- All homes are backed by Vesta's full time service department.
- Certified new home warranty provided by National New Home Warranty.

CUSTOMIZE YOUR HOME

- Personalize your home by choosing from 3 professionally designed colour palettes to reflect your individual taste and style.
- Upgrade from our list of customization options.



SOUTH POINT

A MASTER PLANNED COMMUNITY

SITE PLAN PHASE 4





SOUTH POINT

A MASTER PLANNED COMMUNITY

THE ALBANY

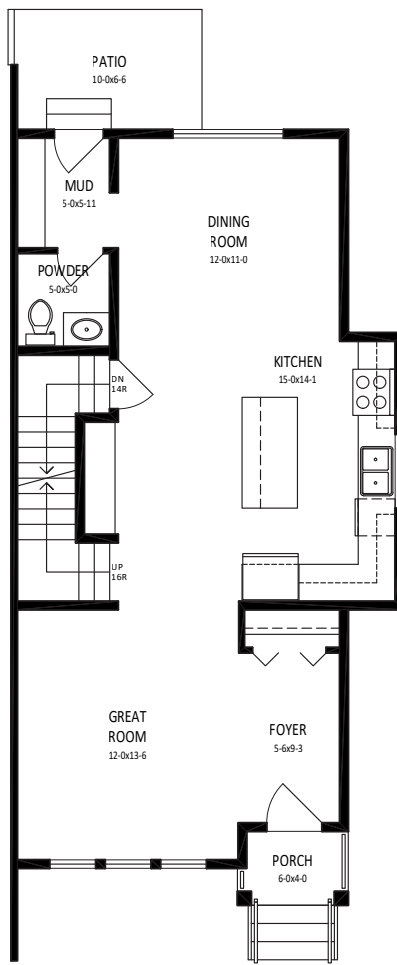
1,510 SQ FT

3 BEDROOM

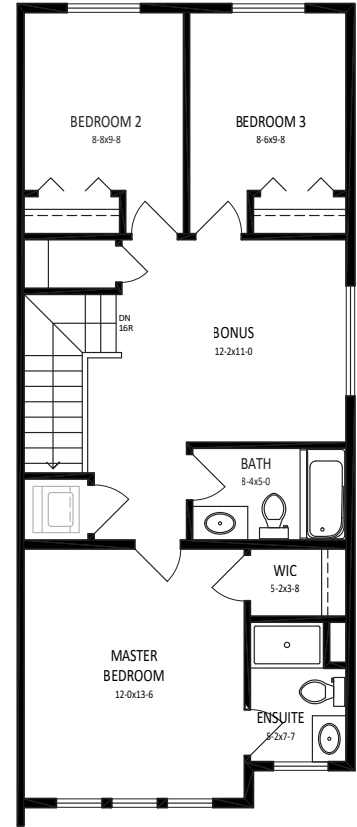
+ BONUS ROOM

2 BATHROOM

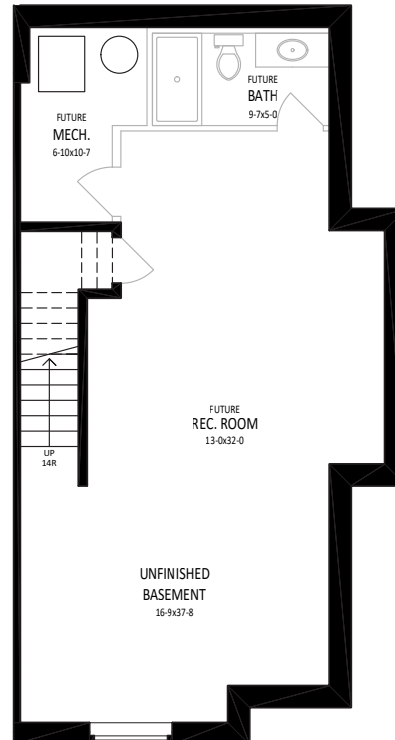
764 SQ. FT. BASEMENT



MAIN 764 SQ. FT.



SECOND 746 SQ. FT.



BASEMENT 764 SQ. FT.

The developer reserves the absolute right to modify, cancel or extend this offer at any time without prior notice. Actual interiors, exteriors and views may be noticeably different than what is depicted in photographs. This is not an offering for sale. Any such offering may only be made with the applicable offer to purchase and agreement of sale and disclosure statement. Prices and availability are subject to change without notice. E. & O.E.



SOUTH POINT

A MASTER PLANNED COMMUNITY

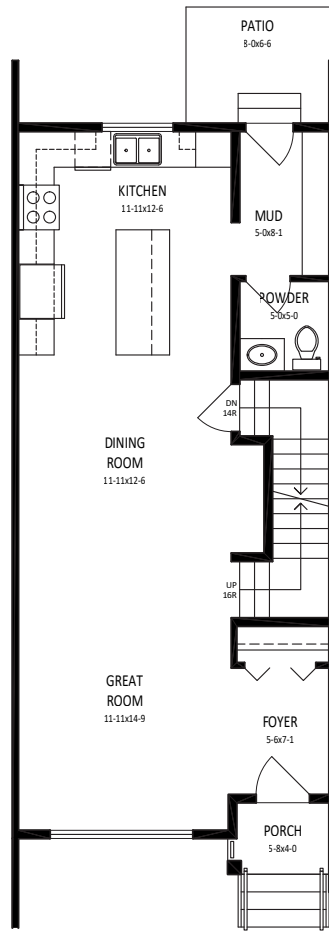
THE CARLISLE

1,443 SQ FT

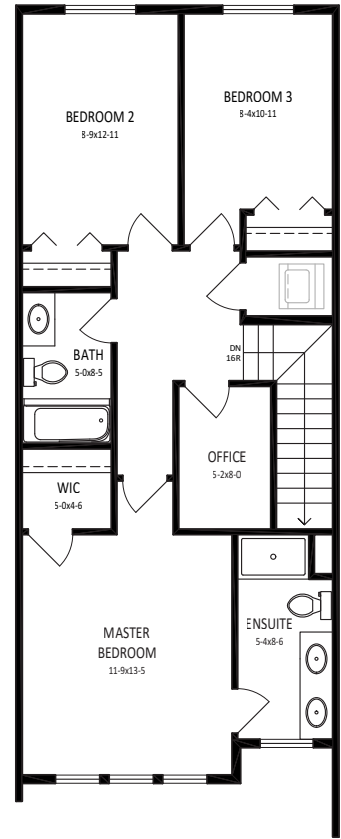
3 BEDROOM + OFFICE

2 BATHROOM

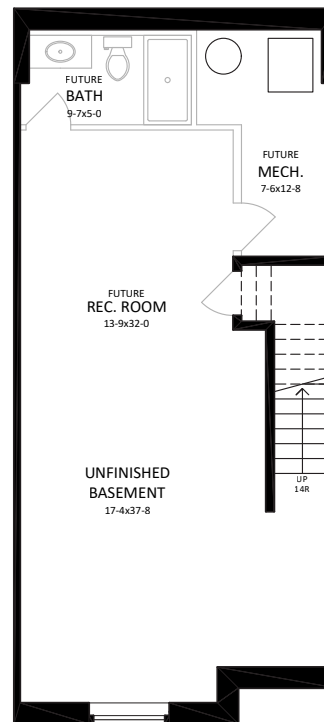
711 SQ. FT. BASEMENT



MAIN 711 SQ. FT.



SECOND 732 SQ. FT.



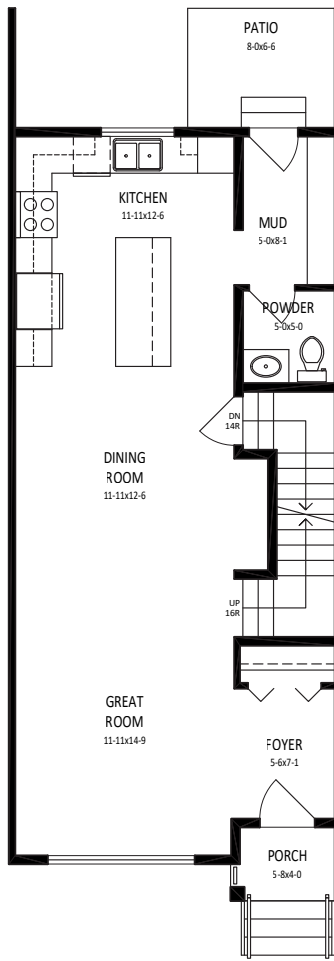
BASEMENT 711 SQ. FT.



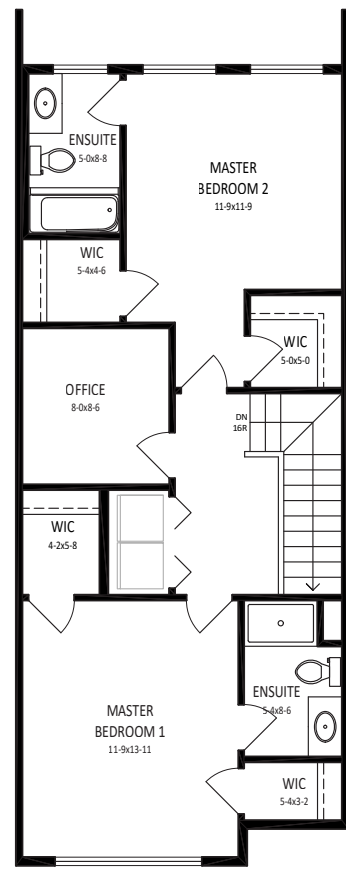
SOUTH POINT

A MASTER PLANNED COMMUNITY

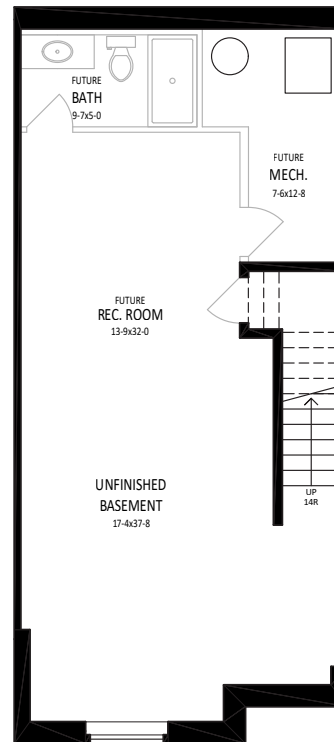
THE CARLISLE 2
1,444 SQ FT
2 BEDROOM + OFFICE
2 BATHROOM
711 SQ. FT. BASEMENT



MAIN 711 SQ. FT.



SECOND 733 SQ. FT.



BASEMENT 711 SQ. FT.

The developer reserves the absolute right to modify, cancel or extend this offer at any time without prior notice. Actual interiors, exteriors and views may be noticeably different than what is depicted in photographs. This is not an offering for sale. Any such offering may only be made with the applicable offer to purchase and agreement of sale and disclosure statement. Prices and availability are subject to change without notice. E. & O.E.



SOUTH POINT

A MASTER PLANNED COMMUNITY

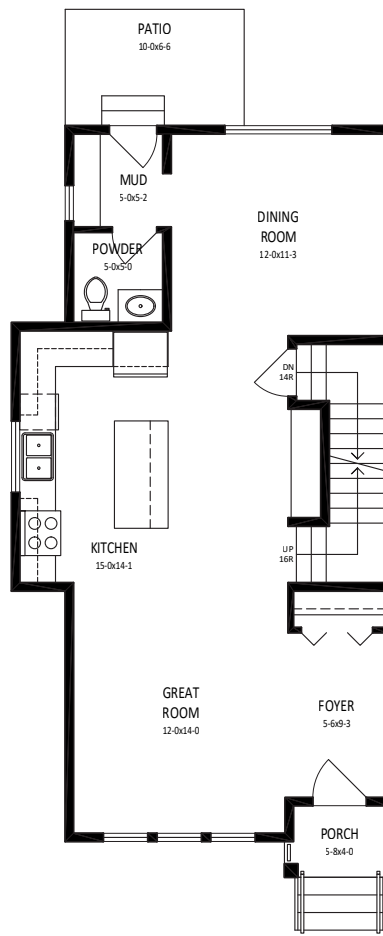
THE BRADLEY

1,510 SQ FT

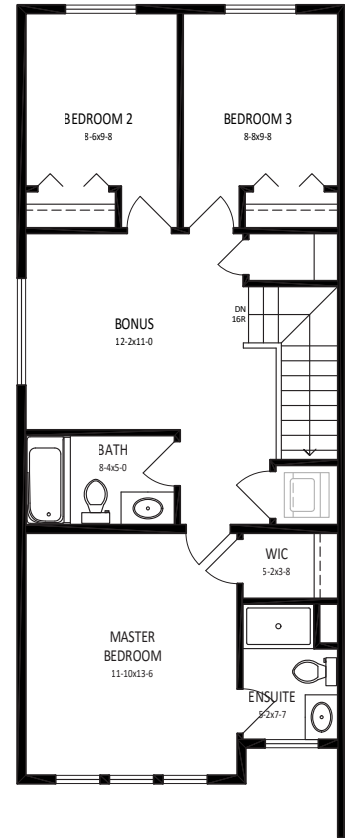
3 BEDROOM + BONUS

2 BATHROOM

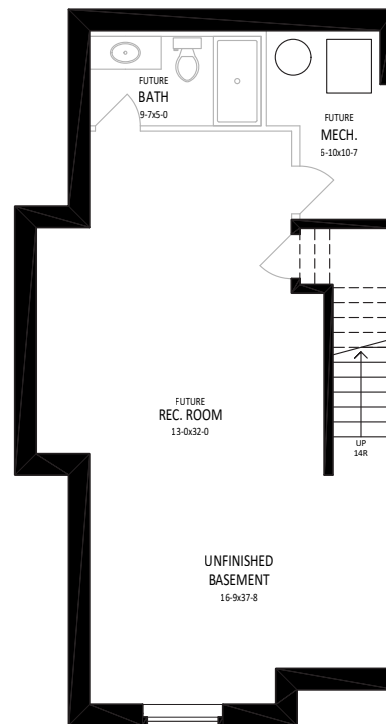
764 SQ. FT. BASEMENT



MAIN 764 SQ. FT.



SECOND 746 SQ. FT.



BASEMENT 764 SQ. FT.



SOUTH POINT

A MASTER PLANNED COMMUNITY

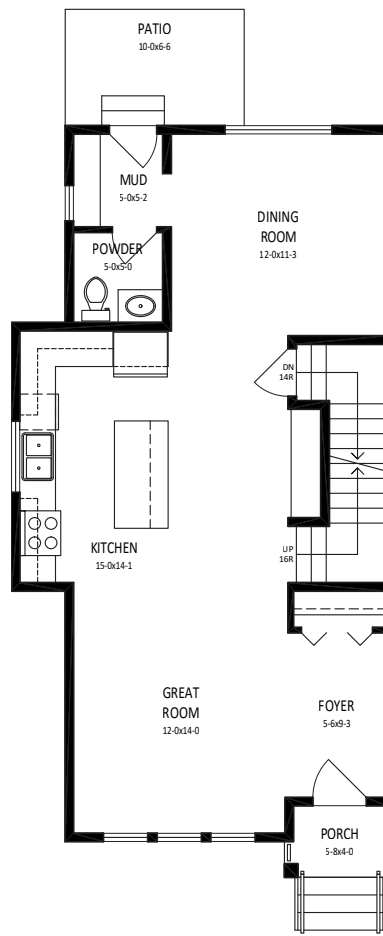
THE BRADLEY 2

1,501 SQ FT

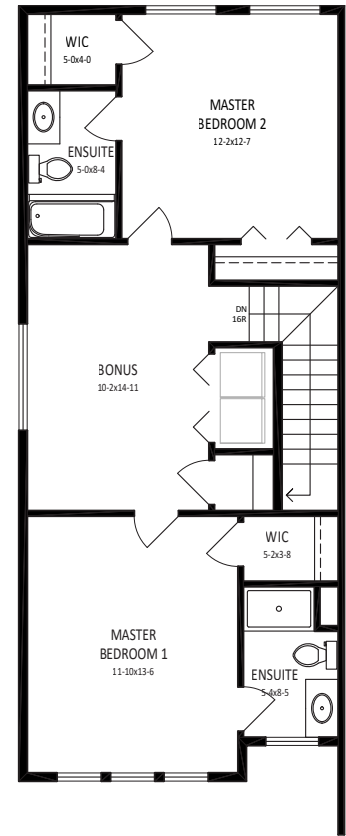
3 BEDROOM + BONUS

2 BATHROOM

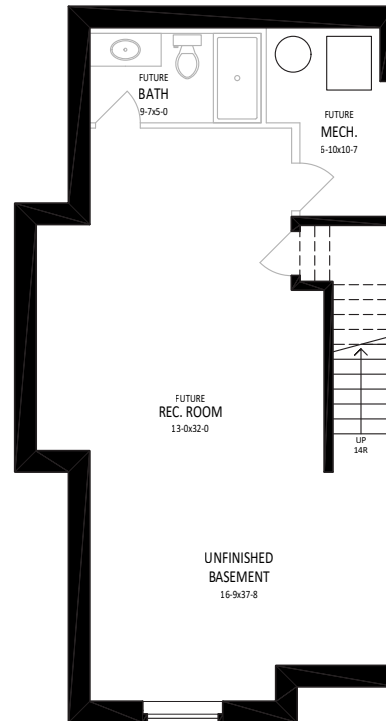
764 SQ. FT. BASEMENT



MAIN 764 SQ. FT.



SECOND 737 SQ. FT.



BASEMENT 764 SQ. FT.



SOUTH POINT

A MASTER PLANNED COMMUNITY

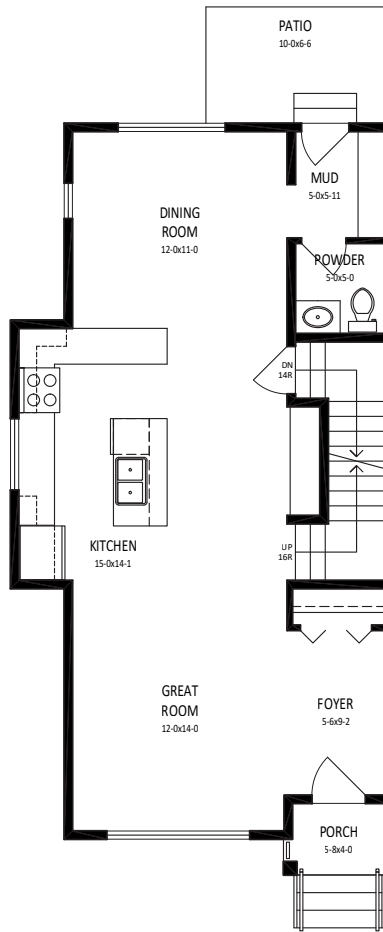
THE ELMWOOD

1,510 SQ FT

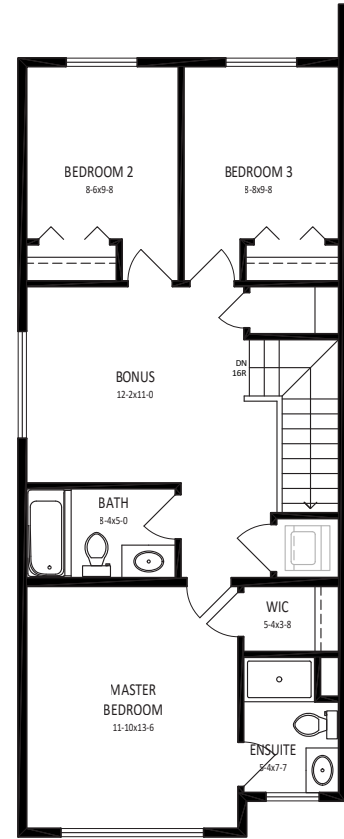
3 BEDROOM + BONUS

2 BATHROOM

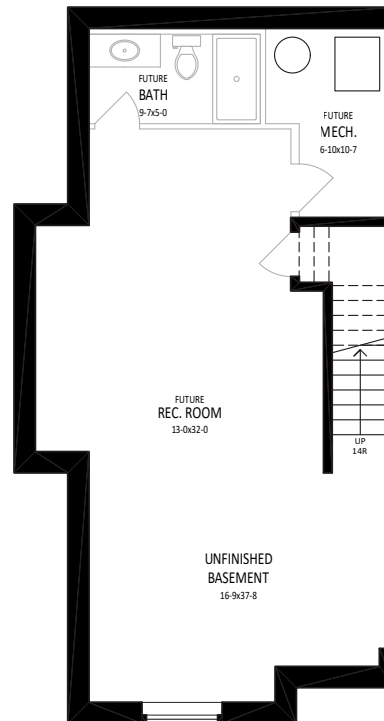
764 SQ. FT. BASEMENT



MAIN 764 SQ. FT.



SECOND 746 SQ. FT.



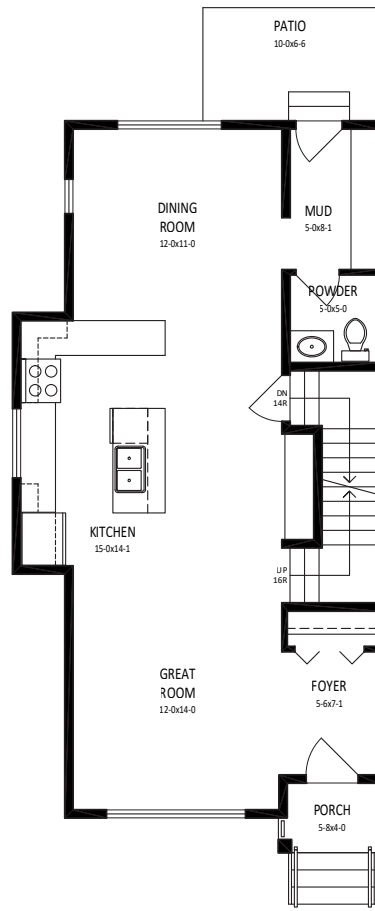
BASEMENT 764 SQ. FT.



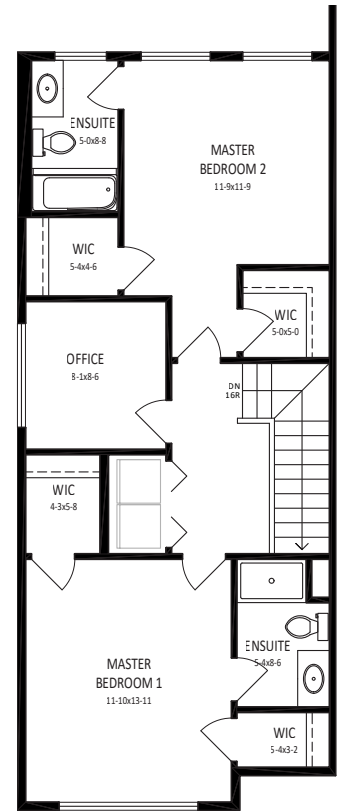
SOUTH POINT

A MASTER PLANNED COMMUNITY

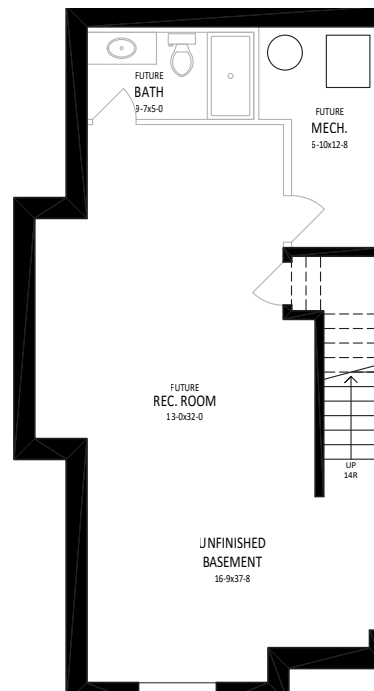
THE ELMWOOD 2
1,506 SQ FT
2 BEDROOM + BONUS
2 BATHROOM
764 SQ. FT. BASEMENT



MAIN 764 SQ. FT.



SECOND 742 SQ. FT.



BASEMENT 764 SQ. FT.



SOUTH POINT

A MASTER PLANNED COMMUNITY

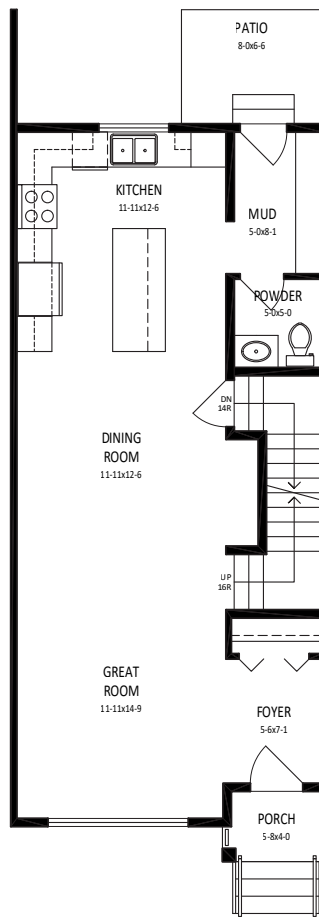
THE FINNLAY

1,443 SQ FT

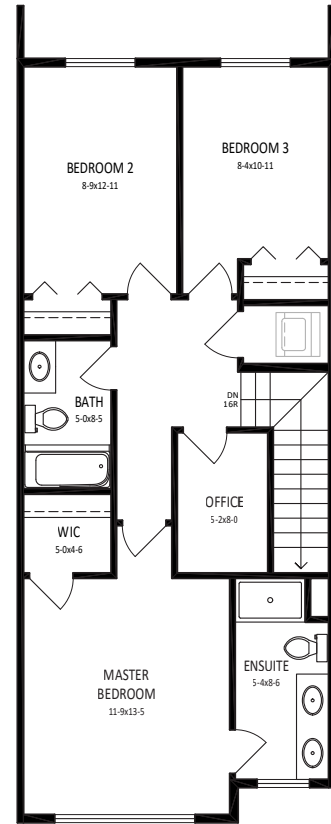
3 BEDROOM + BONUS

2 BATHROOM

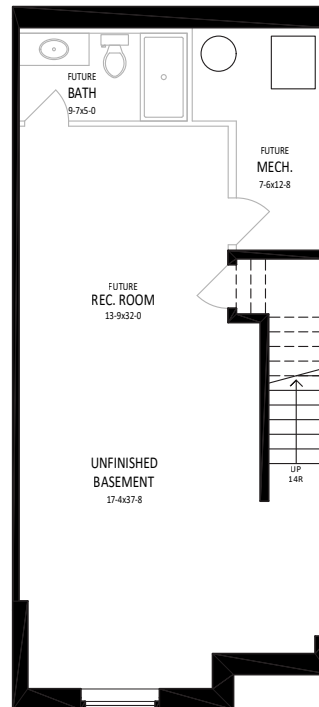
764 SQ. FT. BASEMENT



MAIN 711 SQ. FT.



SECOND 732 SQ. FT.



BASEMENT 764 SQ. FT.